

MAJOR EXPLORATION AT EAST CAROLINA UNIVERSITY!

Step One: View the major options at East Carolina University!

Directions— Through research, highlight majors that interest you, eliminate majors that do not!

ALLIED HEALTH SCIENCES

Clinical Laboratory Science (BS)	2.0*
Nutrition & Dietetics (BS)	3.0*
Didactic Program in Dietetics	
Nutrition with Science	
Health Services Management (BS)	2.75*
Rehabilitation Services (BS)	2.5*
Speech & Hearing Sciences (BS)	3.2*

ARTS AND SCIENCES

African & Afr. American Stud. (BA)	2.0
African	
African-American	
Anthropology (BA)	2.0
Applied Atmospheric Science (BS)	2.0
Biochemistry (BS)	2.0
Biology (BS)	2.0
Chemistry (BA/BS)	2.0
Criminal Justice (BS)	2.0
Economics (BA/BS)	2.0
Applied (BS)	
Quantitative (BS)	
English (BA)	2.0
Foreign Languages & Literatures	
French (BA)	2.0
French Education (BS)	2.5
German (BA)	2.0
German Education (BS)	2.5
Hispanic Studies (BA)	2.0
Hispanic Studies Education (BS)	2.5
Geography (BA/BS)	2.0
Environmental Geography	
Human Geography	
Geographic Info Science & Tech (BS)	2.0
Geology (BS)	2.0
Coastal & Marine Geology	
Environmental Geology	
General Geology	
History (BA)	2.0
Mathematics (BA/BS)	2.0
Mathematics	
Statistics	
Computer Science	
Multidisciplinary Studies (BA/BS)	2.0
Asian Studies	
Classical Studies	
Great Books	
Forensic Science	
International Studies	
Neuroscience	
Religious Studies	
Russian Studies	
Security Studies	
Philosophy (BA)	2.0
Physics (BA/BS/BSAP)	2.0
Political Science (BA/BS)	2.0
Psychology (BA)	2.3
Sociology (BA/BS)	2.0
Urban & Regional Planning (BS)	2.0

HEALTH & HUMAN PERFORMANCE

Athletic Training (BS)	2.75*
Birth-Kindergarten Education (BS)	2.5
Child Life (BS)	3.0*
Family & Consumer Sciences Ed. (BS)	2.5
Family & Community Services (BS)	2.5
Child Development	
Family Studies	
Environmental Health (BS)	2.0
Exercise Physiology (BS)	2.75
Health Fitness Specialist (BS)	2.0
Interior Design (BS)	2.5*
Merchandising (BS)	2.5
Physical Education (BS)	2.5
Public Health Studies (BS)	
Community Health	2.65*
Pre-health Professions	2.75*
Worksite Health	2.25
Recreation & Park Management (BS)	2.0
Recreational Therapy (BS)	2.5*
Social Work (BSW)	2.5*
Sports Studies (BS)	2.0

BUSINESS

Accounting	2.5
Finance	2.5
Finance	
Risk Management & Insurance	
Hospitality Management (BS)	2.0
Conventions & Special Events Mgmt.	
Food & Beverage Management	
Lodging Management	
Management	2.5
General Business	
Entrepreneurship & Small Business	
International Business	
Management	
Management Information Systems	2.5
Marketing	2.5
Marketing	
Operations & Supply Chain Mgmt	

EDUCATION

Business Education (BSBE)	2.5
Business & Marketing Education (BSBE)	2.5
Elementary Education (BS)	2.5
English Education (BS)	2.5
History Education (BS)	2.5
Information Technologies (BSBE)	2.0
Math Education (BS)	2.5
Middle Grades Education (BS)	2.5
Science Education (BS)	2.5
Special Education (BS)	2.5
Adapted Curriculum	
General Curriculum	

NURSING

Nursing (BSN)	2.75*
---------------	-------

FINE ARTS & COMMUNICATION

Art (BFA)	2.0*
Animation Interactive Design	
Cinematic Arts Media Production	
Ceramics	
Graphic Design	
Illustration	
Metal Design	
Painting & Drawing	
Photography	
Printmaking	
Sculpture	
Textiles	
Art Education (BFA)	2.5*
Art History & Appreciation (BA)	2.0*
Liberal Arts Concentration	
Studio Art Concentration	
Communication (BS)	2.5
Interpersonal/Organizational	
Journalism	
Media Studies	
Public Relations	
Dance (BFA)	2.5*
Dance Education (BFA)	2.5*
Music (BM)	
Performance	2.5*
Theory & Composition	3.0*
Therapy	2.5*
Music Education (BM)	2.5*
Theatre Arts (BA)	2.5*
Theatre Arts (BFA)	2.5*
Musical Theatre	
Professional Actor Training	
Stage Management	
Theatre Design & Production	
Theatre for Youth	
Theatre Arts Education (BFA)	2.5*

ENGINEERING & TECHNOLOGY

Computer Science (BA/BS)	2.0
Construction Management (BS)	2.0
Design (BS)	2.0
Architectural Technology	
Mechanical Technology	
Engineering (BS)	2.8*
Biomedical Engineering	
Bioprocess Engineering	
Electrical Engineering	
Environmental Engineering	
Industrial & Systems Engineering	
Mechanical Engineering	
Industrial Distribution & Logistics (BS)	2.0
Industrial Engineering Tech. (BS)	2.0
Information & Computer Tech. (BS)	2.0
Computer Networking	
Information Security	
Information Technology	

* Represents Competitive and Selective Majors



Step Two: Investigate the major at East Carolina University!

Use the ECU Degree Explorer to find out all about the major:

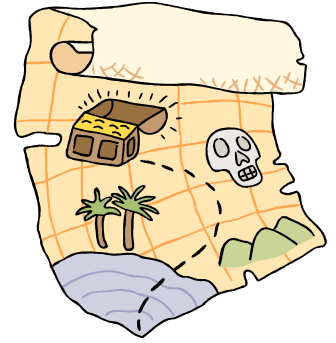
www.ecu.edu/degrees

Check out the major's recommended four-year-plan:

www.ecu.edu/cs-acad/advising/degreeplans.cfm

Find degree requirements & course descriptions in the catalog:

www.ecu.edu/cs-acad/registrar/catalog.cfm → Undergraduate Majors



Step Three: Research future career possibilities for each major!

Use ECU's WCIDWAMI's or Google to discover related job possibilities:

→ http://www.ecu.edu/cs-studentaffairs/career/students/with_this_major.cfm

→ www.google.com → Search "what can I do with a ____ major"

Search career information related to majors, including pay, outlook, and similar jobs:

→ *Occupational Outlook Handbook*: www.bls.gov/oooh → Search Handbook

→ *O*NET OnLine*: www.onetonline.org

Complete informational interviews/volunteer/job shadow to gain valuable experience!

Step Four: Complete Career Assessments!

Complete FREE career assessments, including *Interest Profiler*, *Career Cluster*, *Basic Skills*, *Transferrable Skills*, *Work Values*, and *The Career Key*:

www.CFNC.org → Plan → Plan for a Career → Learn About Yourself

Meet with ECU career counselors to discuss assessment results & career options:

www.ecu.edu/career/

The road leading to a goal does not separate you from the destination; it is essentially a part of it.

~Charles DeLint